

RP58

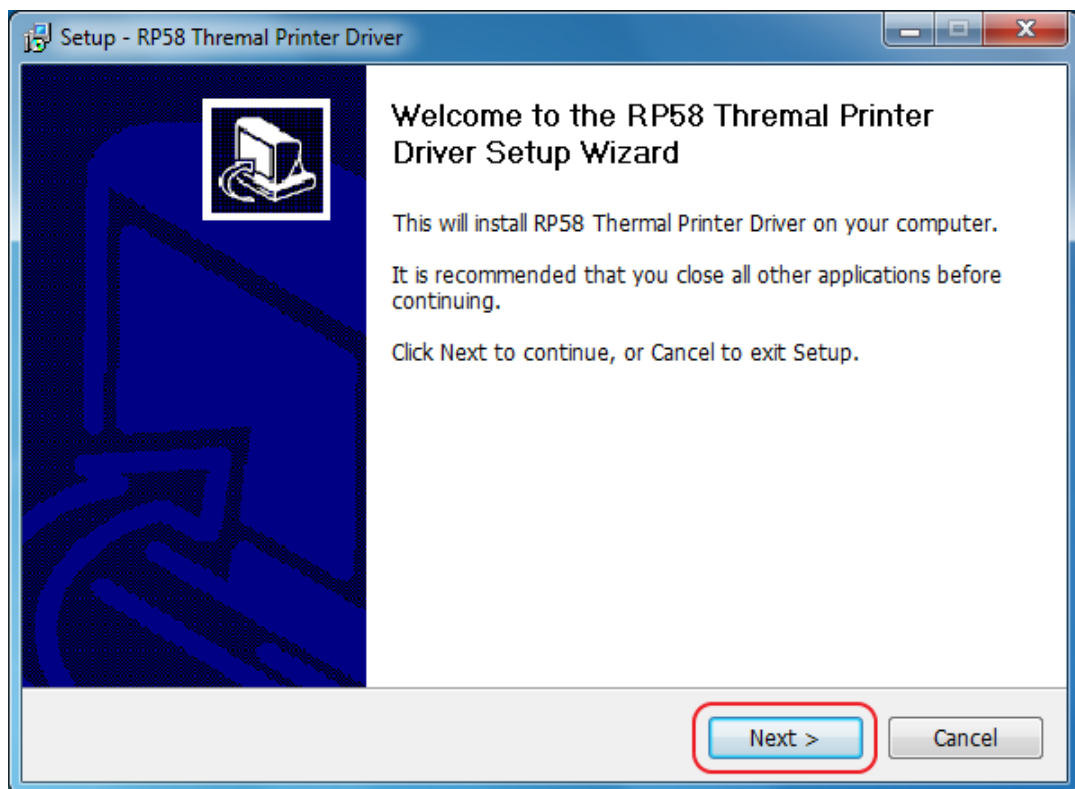
Driver Setup Manual

一、 windows Driver Installation

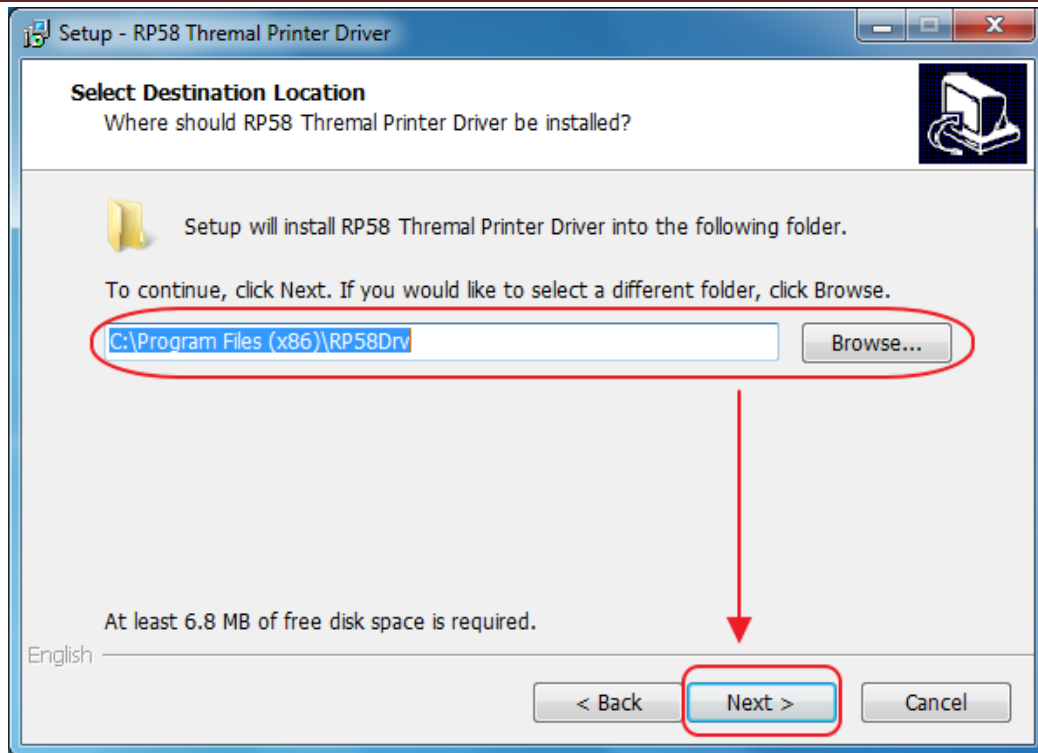


Double click the icon as above.

Following is the welcome screen:

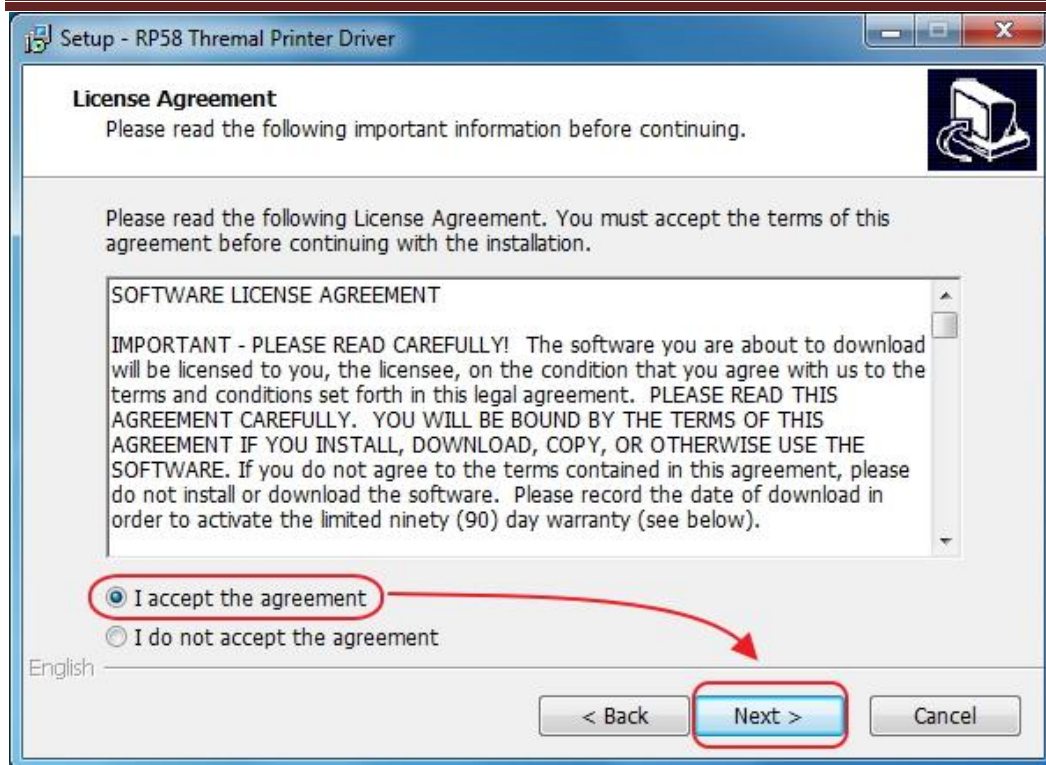


Click “next” (see the following picture)

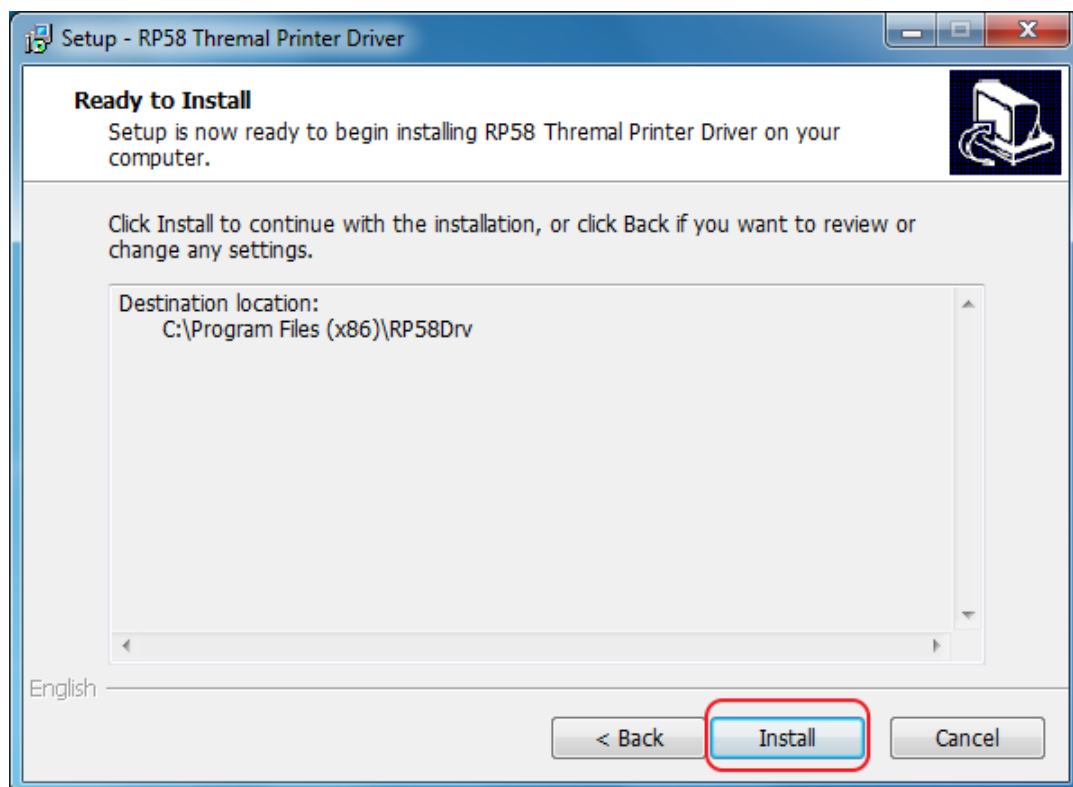


The driver default(recommended) installed in C specific folder, if the user hope to change the installanation path, please click “ Browse...” and choose the destination folder, then click “Next”. (see the following picture)

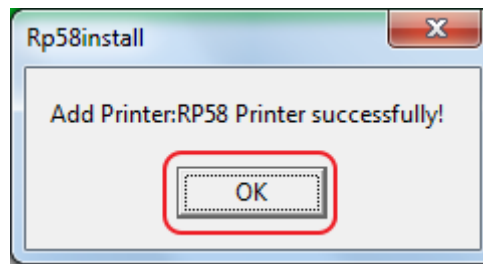
Xiamen Rongta Technology Co., Ltd.



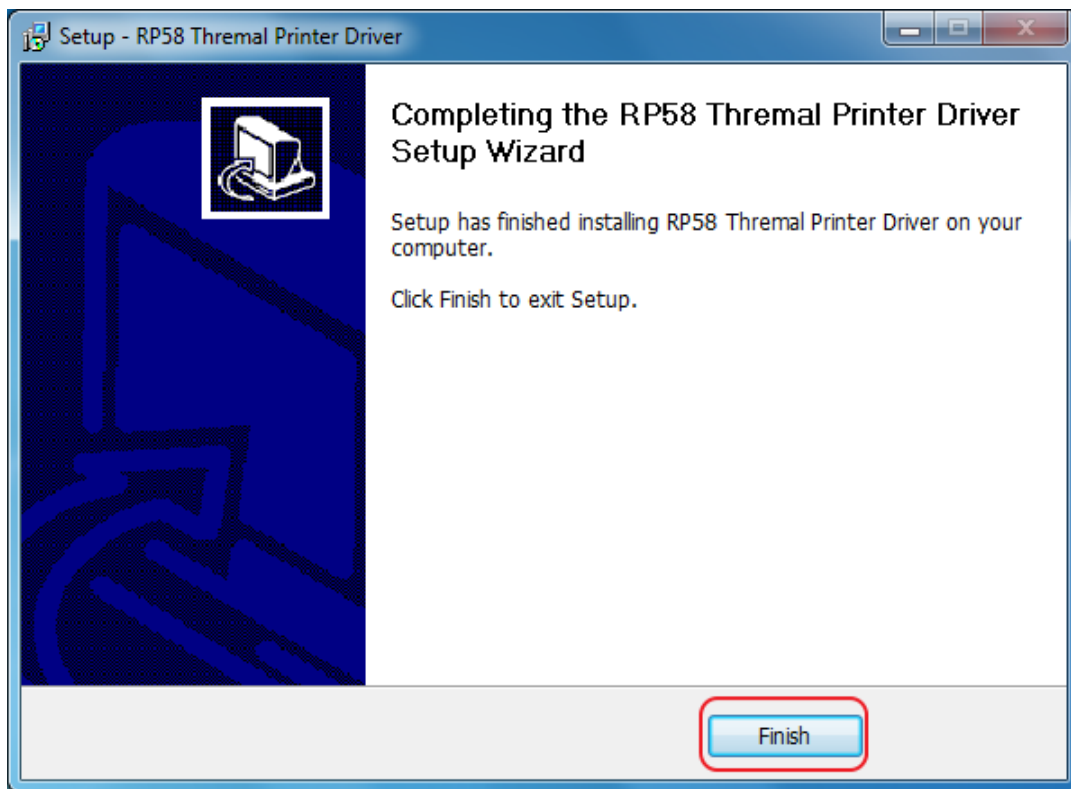
Please read the license agreement carefully and then choose “ I accept the agreement”. (see the following picture)



Click “Install.” (See the following picture).



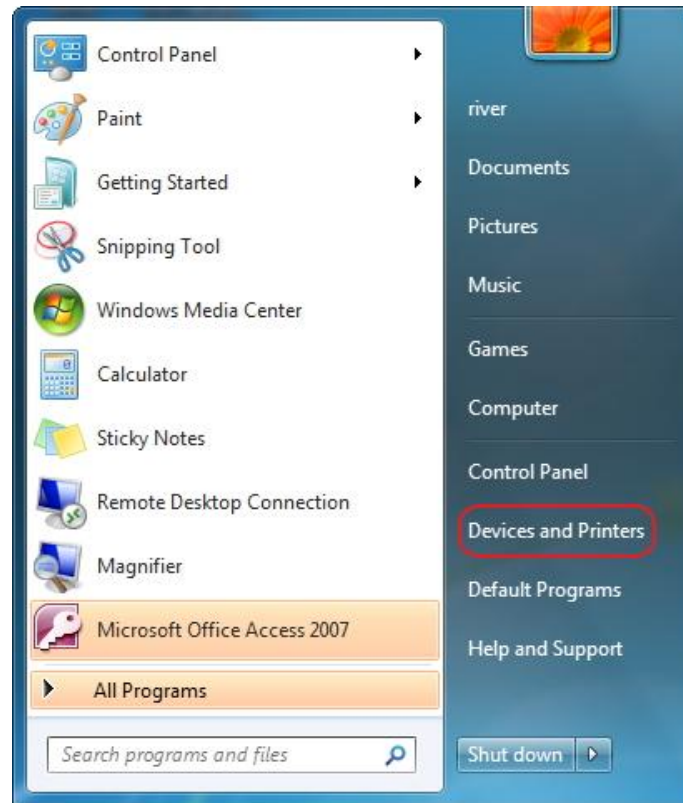
After it, please wait for minutes, when the pending installation is completed that would appear the above information, which means the setting is successful, then click “ok”. (see the following picture)



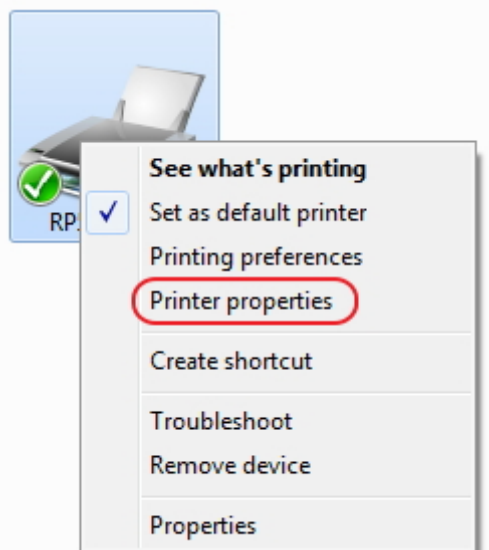
Click “Finish” to exist the setup.

二、 Setup and test the printer

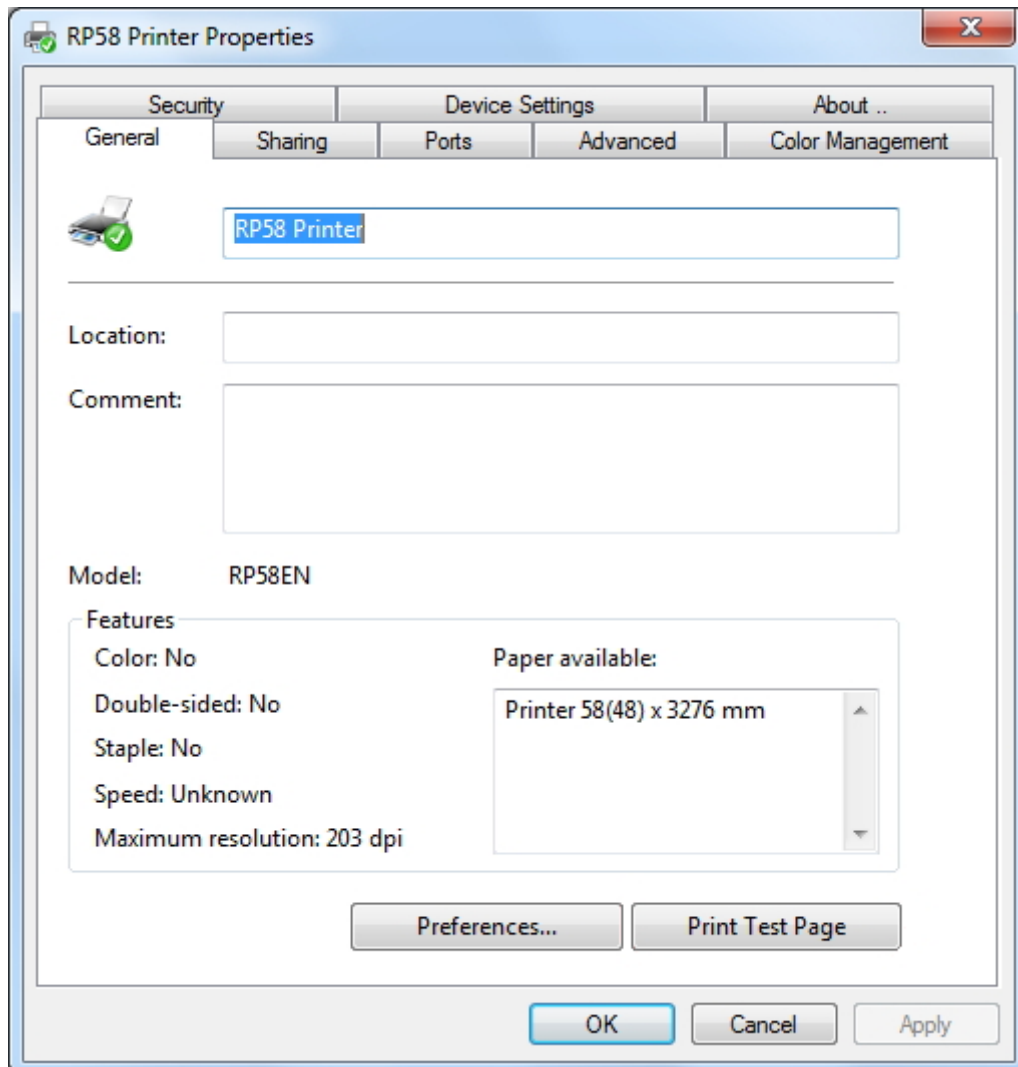
1、 Setting printer property



Click "Start" menu, then find and click " Devices and Printers" as above. (see the following picture)



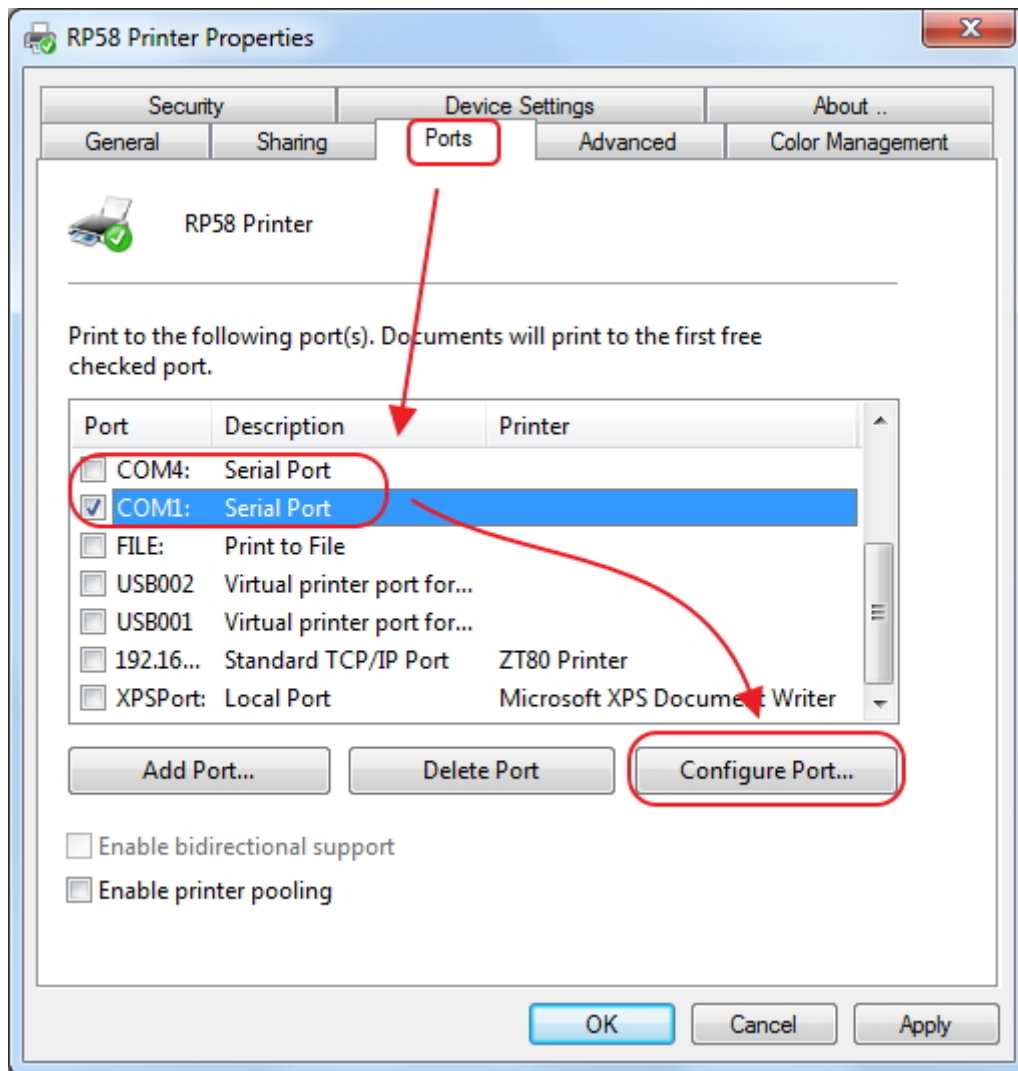
Right click “RP58 Printer” and choose “Printer Properties” that would appear following picture:



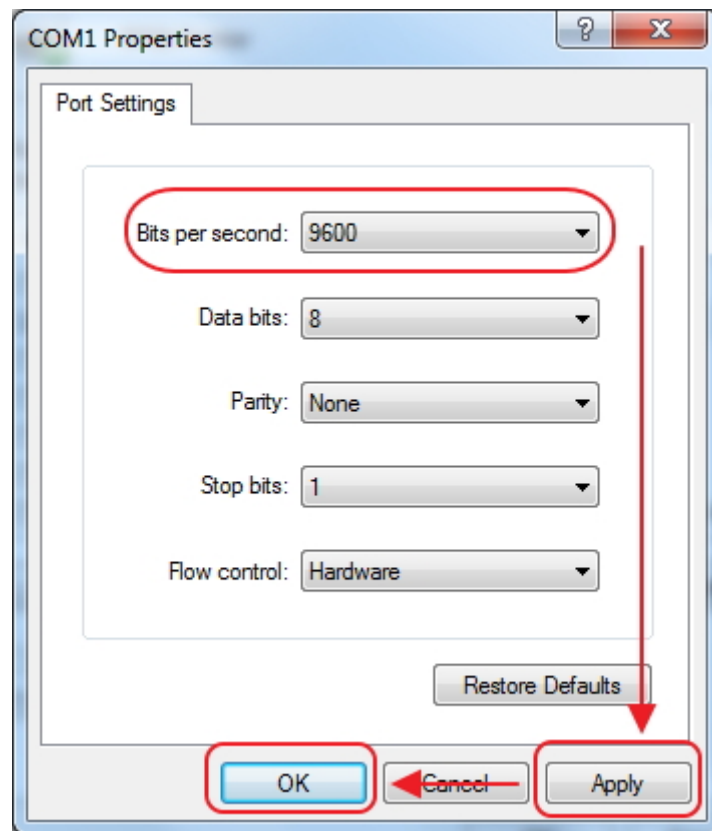
In RP58 Printer Properties, please find “General” option, the user could configure the communication interface of printer, such as serial, parallel, USB, and also could set the paper size etc. When the setting is finished, the user could print the test page.

2、Serial Port Configuration

In “RP58 Printer Properties”, please switch to “Ports” option to set up the serial communication interface between printer and computer, such as following picture:



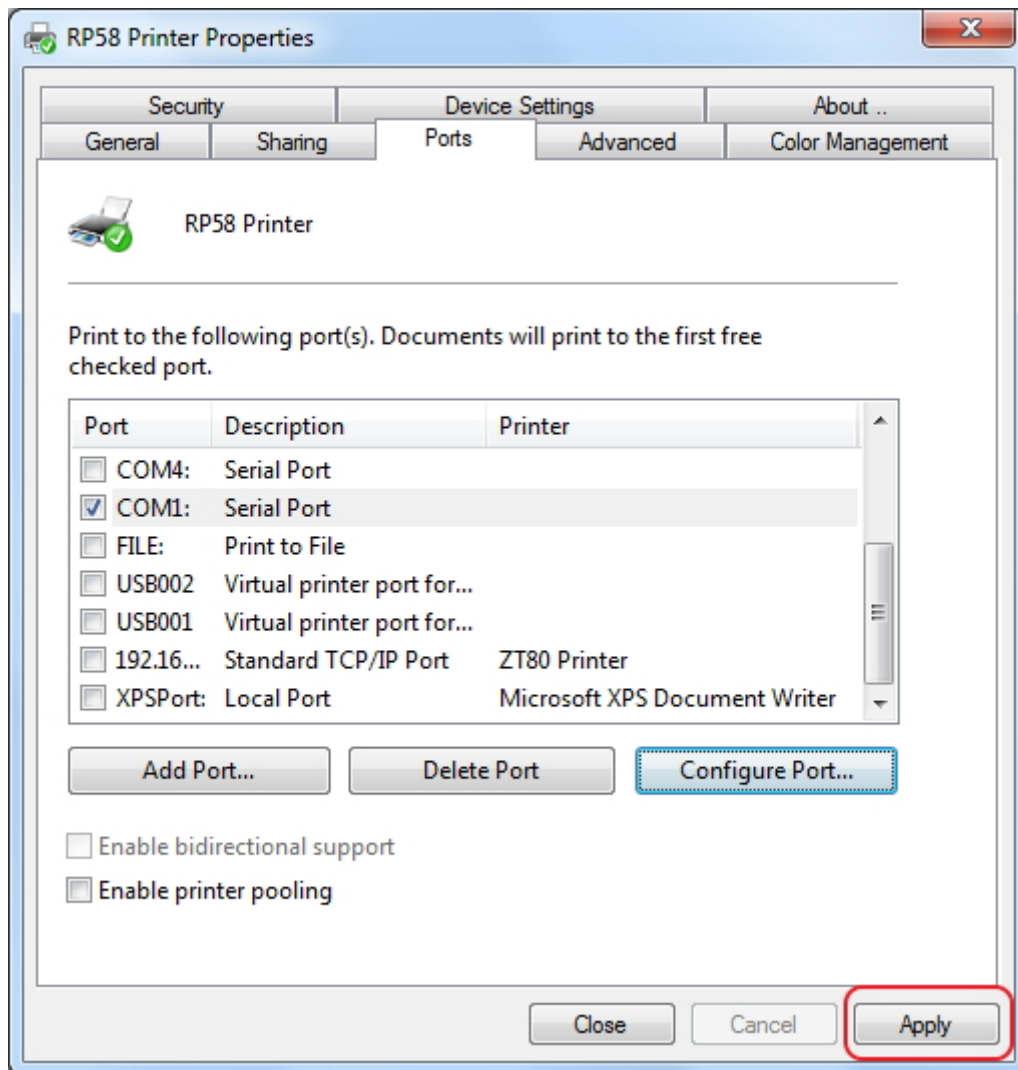
Choose available COM interface, such as the one shown in above and then click “Configure Port” for parameter setting. (see the following picture)



“ Bits per second” is the baud rate of serial port, the option should be same as printer setting, such as the baud rate of printer is “9600bsp”, the user should choose “9600” at here. (Factory default baud rate is 9600bps.)

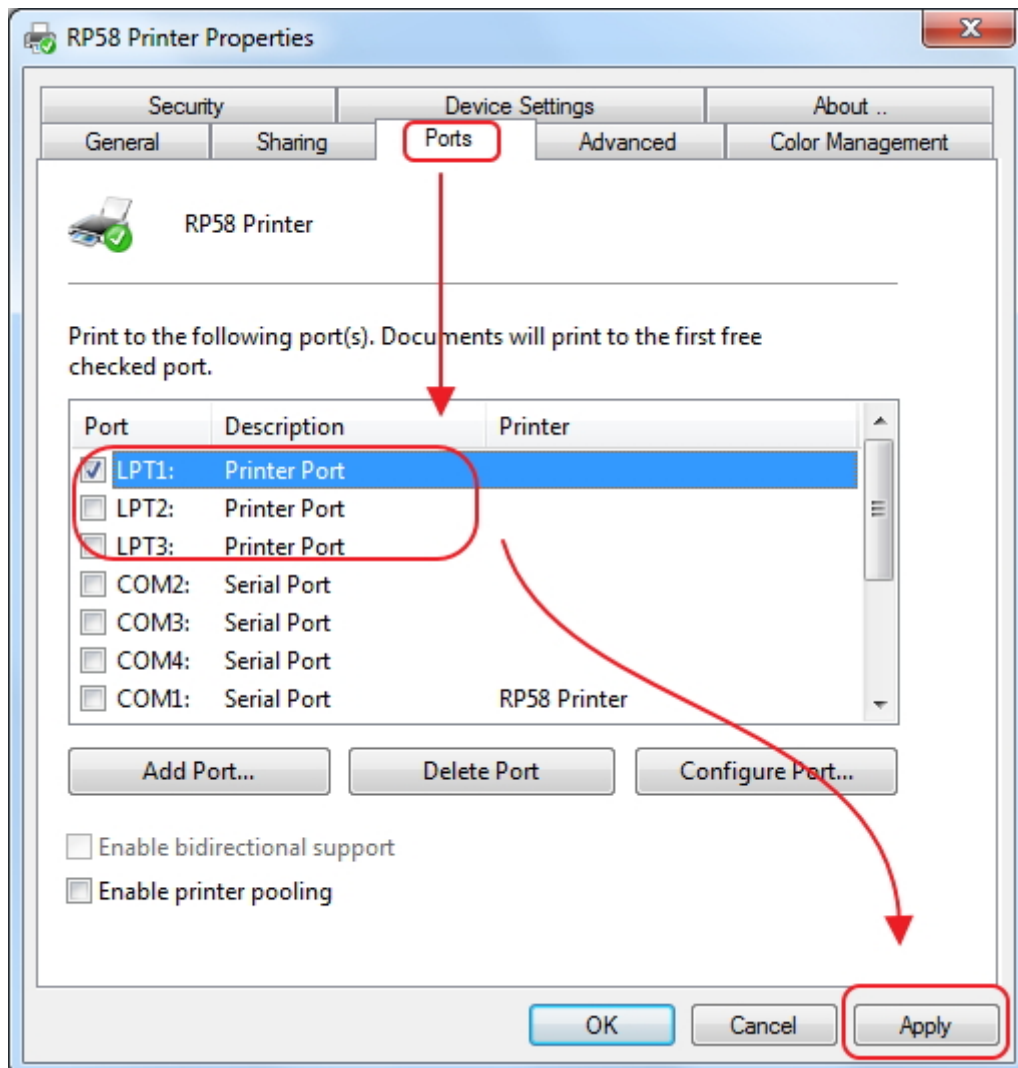
After setting, click “Apply” first, then click “OK”.

Before returning the following picture, please click “ Apply ” to complete the configuration of serial port.



3、Parallel Port Configuration

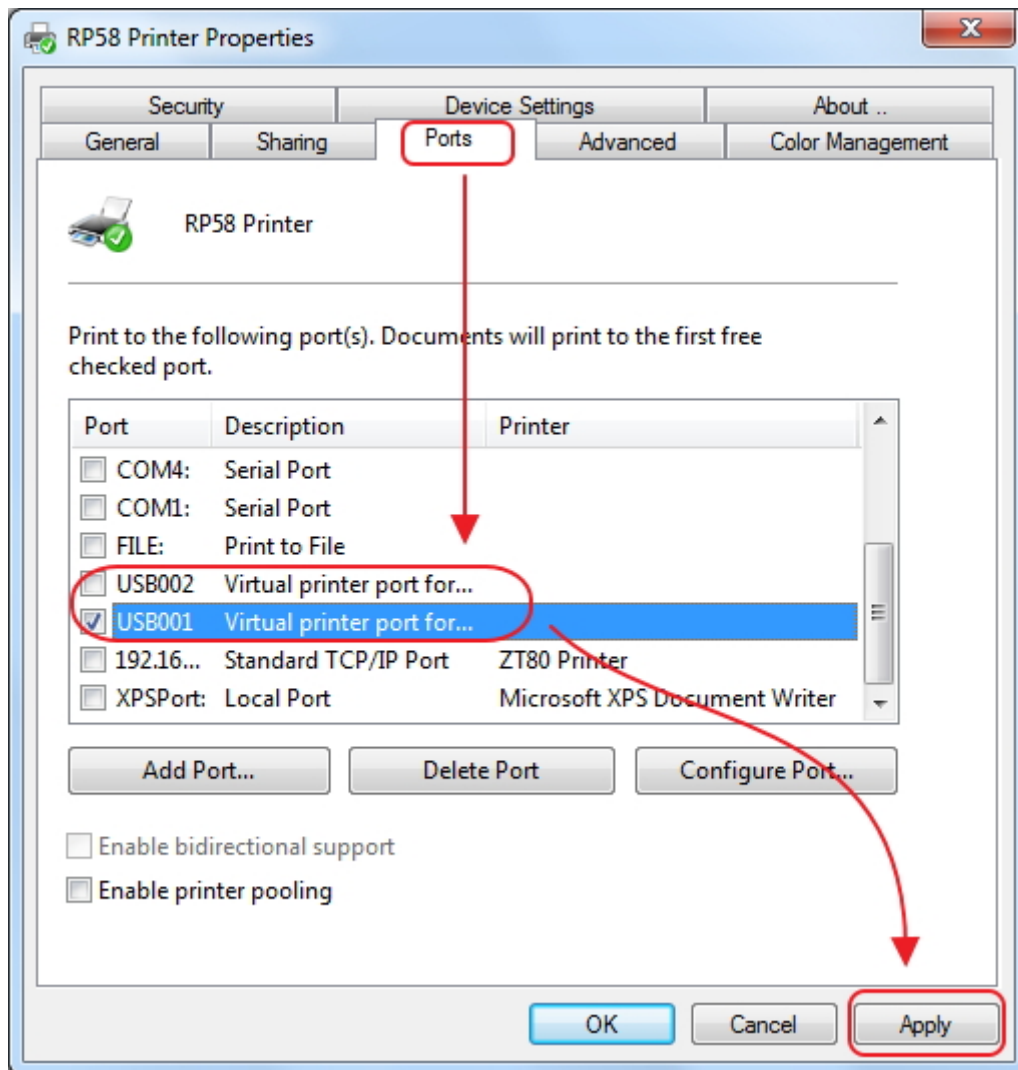
In “RP58 Printer Properties”, please switch to “Ports” option to set up the parallel communication interface between printer and computer. Such as the following picture:



Choose available LTP port, like the one shown in above and then click “Apply” to finish the configuration of parallel port.

4、USB Port Configuration

In “RP58 Printer Properties”, please switch to “Ports” option to set up the USB communication interface between printer and computer. Such as the following picture:

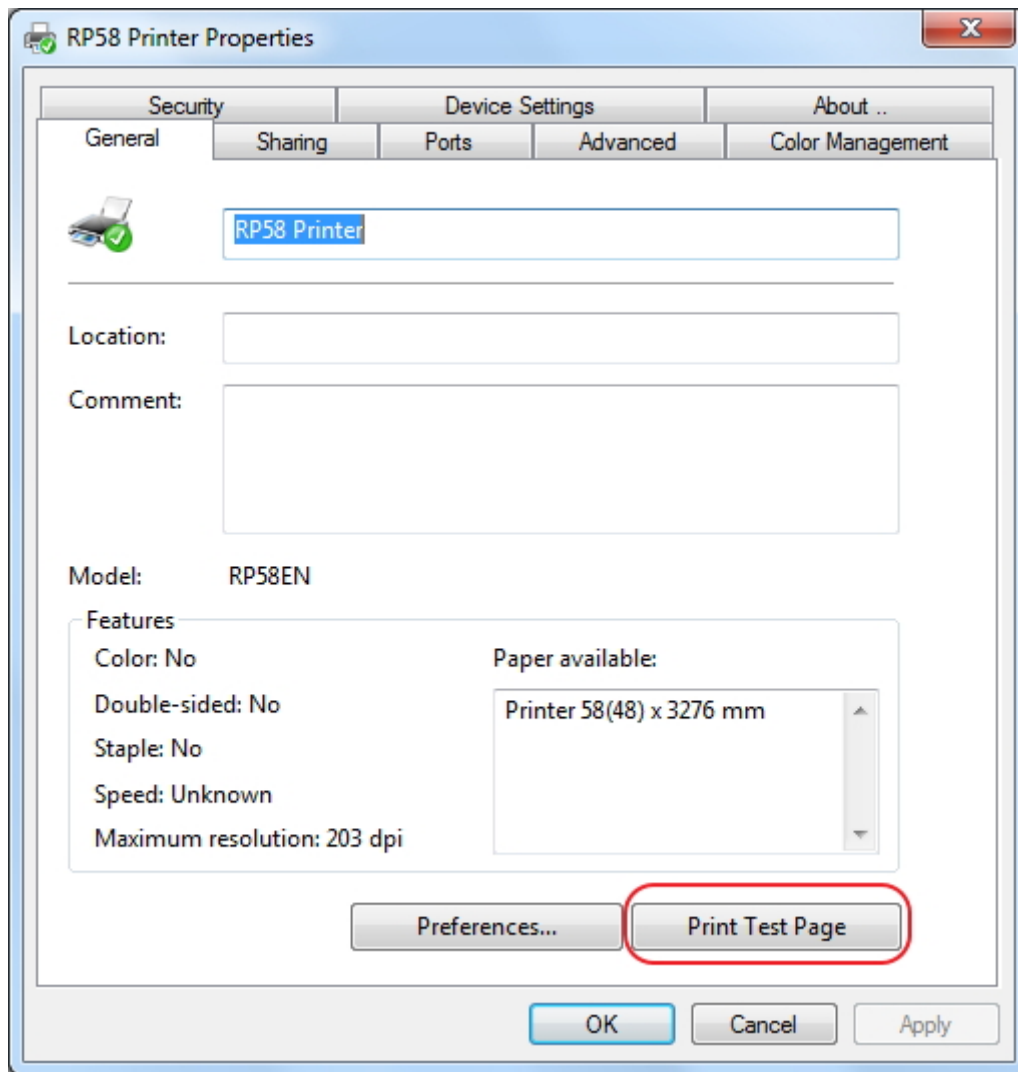


Choose the available USB port, such as the one shown in above and then click “Apply” to complete the configuration of USB port.

5、Print test page

When the configuration of communication port is finished, the user could print the test page.

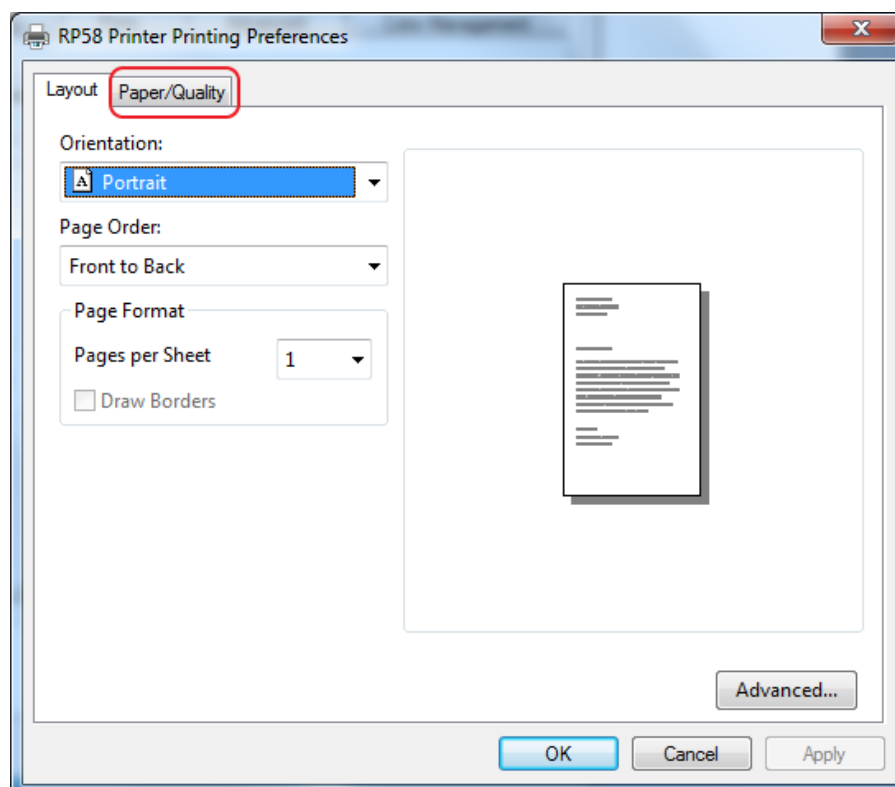
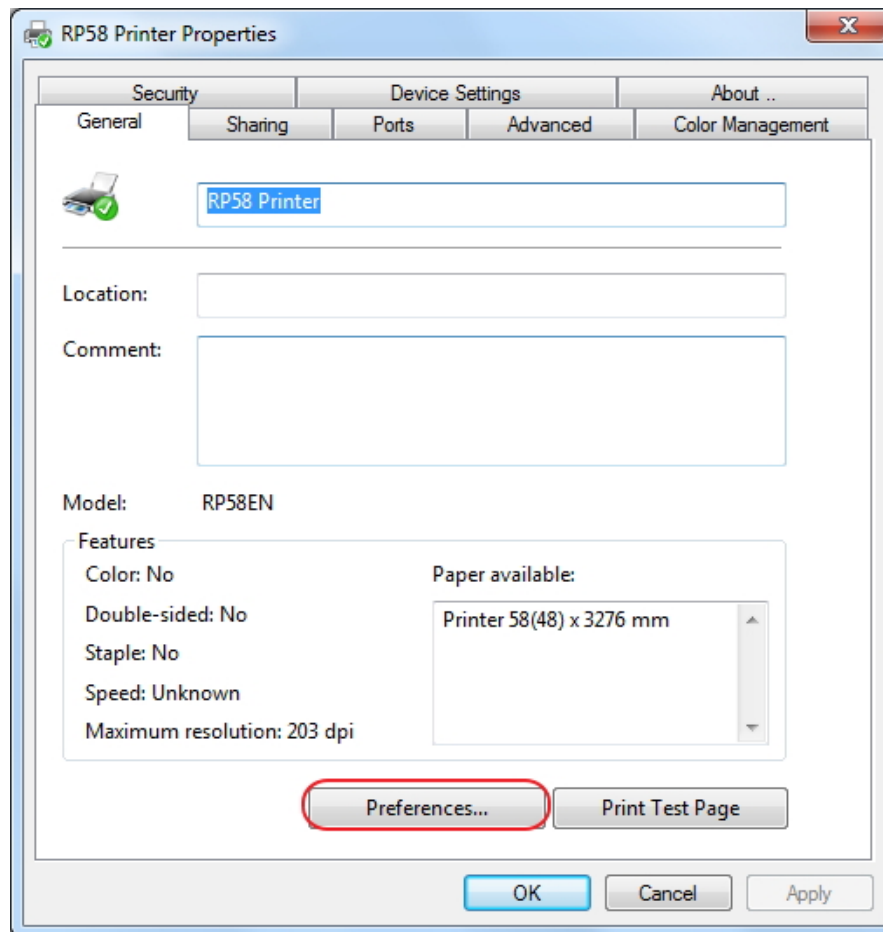
Return to the “General” option in “RP58 Printer Prosperities”, such as the following picture:

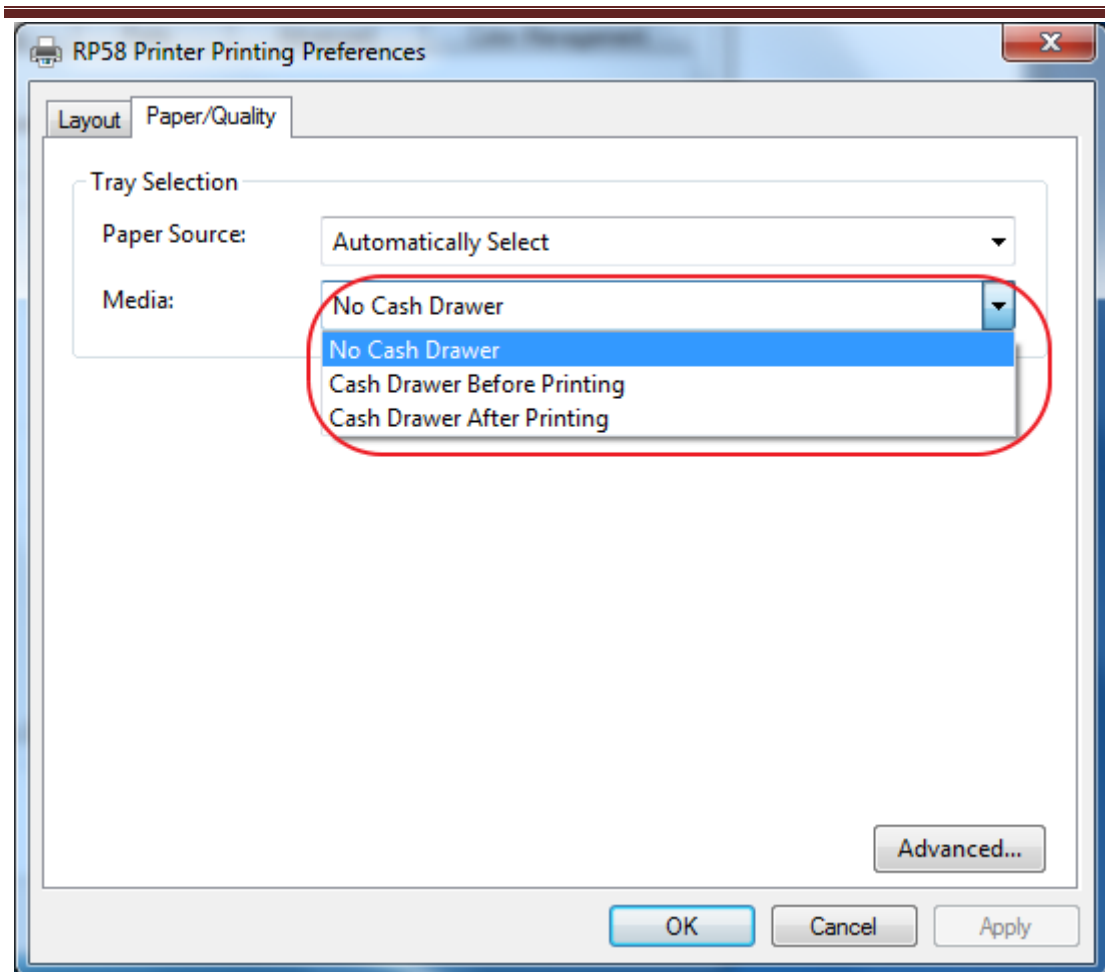


Click “Print Test Page”, if the printer has connected to the computer and the configuration of communication port is correct, the printer would execute the print command , then print the test page.

6、 Other properties and functions setting

The user also could set up the cash drawer operation, please find following instructions:





Cash Drawer Setting:

NO Cash Drawer.

Cash Drawer Before Printing.

Cash Drawer After Printing.